



INTERNATIONAL  
**RESCUE**  
COMMITTEE

# Scaling Up Case Management for Asylum Seekers

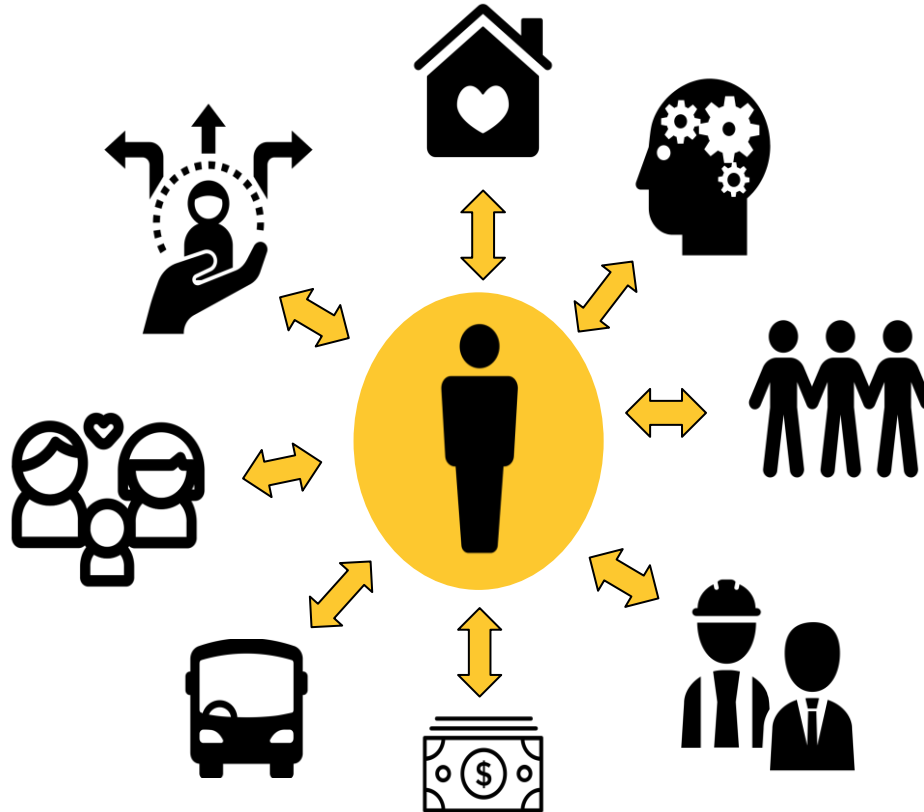
March 3, 2021

# What is Case Management?

**Strengths-based**

**Client-Centered**

**Trauma-Informed**



**Contextually Driven**

**Empowerment Focused**

**Linguistically Accessible + Culturally Responsive**



**Intake**

**Assessment**

**Individual/Family  
Service Planning**

**Education & Training**

**Resource and  
Referral**

**Advocacy**

**Strengthening  
Connections**

**Sustaining Gains**

# Case Management for Asylum Seekers



# Adapting Programs to Context: *from refugee resettlement to asylum services*

## Challenges

- Long, uphill legal battle
- Exclusion from public benefits
- Uncertain timeline to self-reliance

## IRC's approach

- Legal empowerment
- Early integration
- Partnerships





# Scaling Up Case Management

- Leverage and build on existing capacities
- 2-tiered approach to case management
- Legal consultations and representation
- Referral specialists at border shelters



# National Coordination

## *Task Force on Program Implementation*

- Define common outcomes and theory of change
- Technical assistance and resource exchange
- Coordinated liaison for operating agencies to advocacy, border network, and regional partners
- Program evaluation